

NIPPON PRIMEX INC.

Introduction of KIOSK printers

Thank you for the opportunity to introduce our KIOSK printers made by NIPPON PRIMEX, which are ideal for embedded use.

August 2024

NIPPON PRIMEX INC. Overseas Division

SELENIKO 03

Introduction of NIPPON PRIMEX INC.

- 👍 Since our establishment in 1979, we have specialized in small printers for industrial use. In Japan, we have grown as a distributor for manufacturers such as SII, EPSON, CITIZEN, Brother, and Star, and since 1986 we also have been manufacturing and selling our original products. In the category of KIOSK printers, we boast the largest market share.
- 👍 All our products are manufactured at our subsidiary NIPPON PRINTER ENGINEERING INC. located near Mt. Fuji.



NIPPON PRIMEX INC.
Headquarters in Tokyo

NIPPON PRINTER ENGINEERING INC.



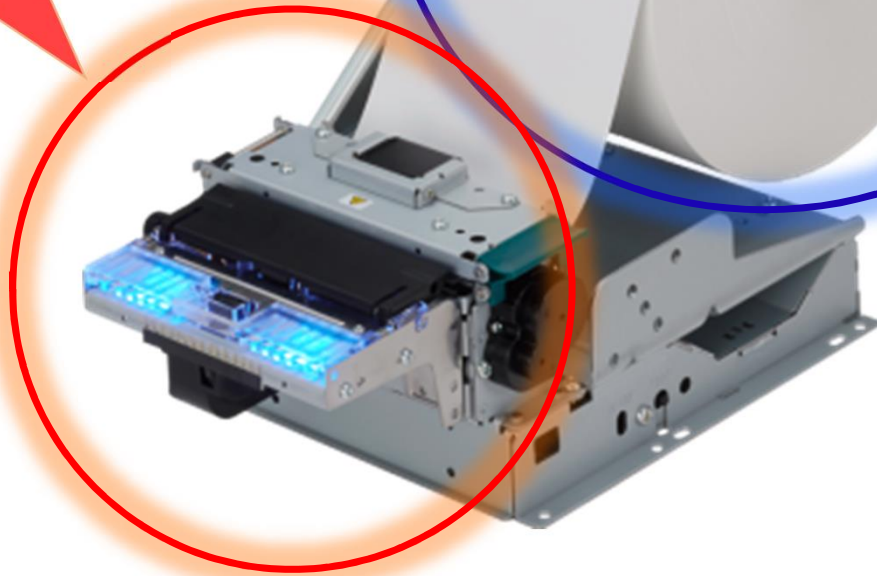
Introduction of NIPPON PRIMEX KIOSK Printers

- 👍 KIOSK printers are products in the category between finished products (POS printer) and components (mechanism).
- 👍 NIPPON PRIMEX offers an extensive lineup of products as follows.



Two strong points of NIPPON PRIMEX KIOSK Printers

Optional parts to prevent problems during paper ejection (Presenter/Bezel)



Large diameter roll paper for saving paper replacement maintenance (Roll paper holder)

Effectiveness of Presenters

① Printer problem at self kiosk terminals

Most printer problems occur during paper ejection.

It is caused by the recipient touching the paper during printing.

Printing will be disturbed if the paper is pulled out before printing is completed.

Even holding the paper before printing is complete can cause paper jamming.



It is difficult to prevent the trouble with POS printers.

Downtime and maintenance man-hours are incurred, leading to loss.

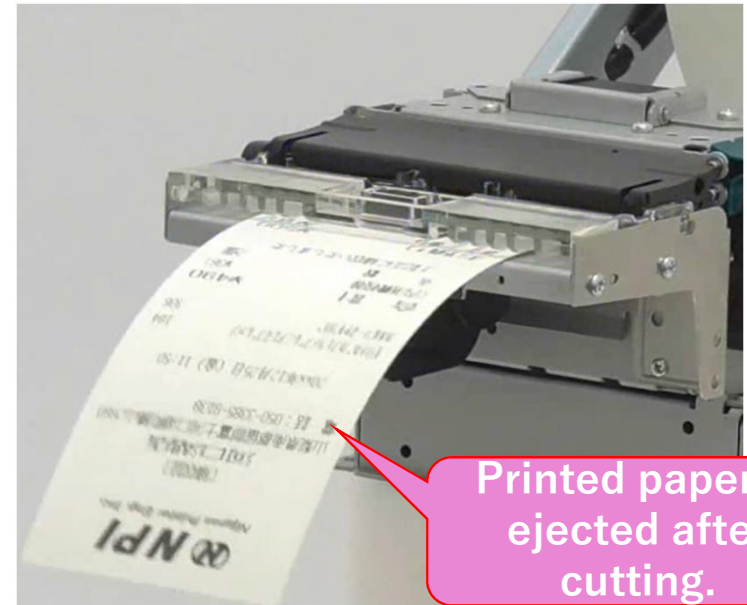
Paper jams are the biggest problem with printers.

Effectiveness of Presenters

Problem prevention

When using a presenter, the paper cannot be touched until printed paper has been cut.

Loop internally and wait until print is finished.

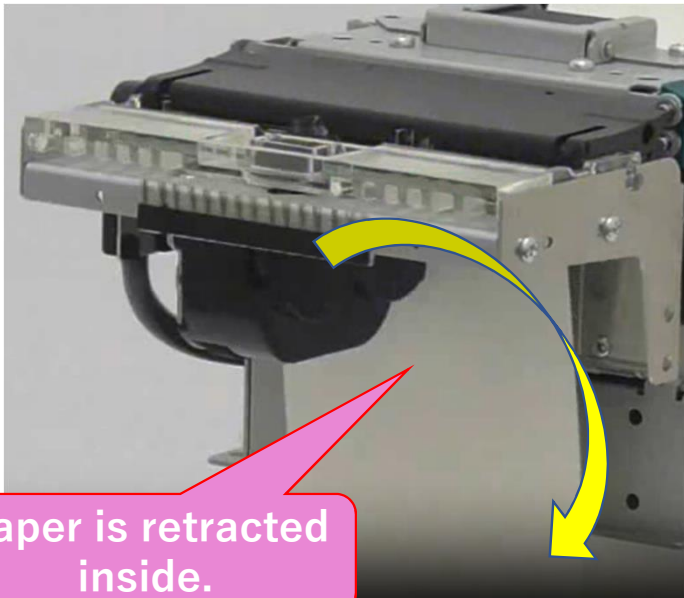


The risk of paper jams is considerably reduced and the performance of self kiosk terminals are greatly improved.

Effectiveness of Presenters

Retraction function

Paper not taken from the paper exit can be retracted or ejected. This prevents leakage of personal information, etc., and allows for smooth transition to the next operation.



Paper is retracted inside.

*Some presenters do not have a retraction function.

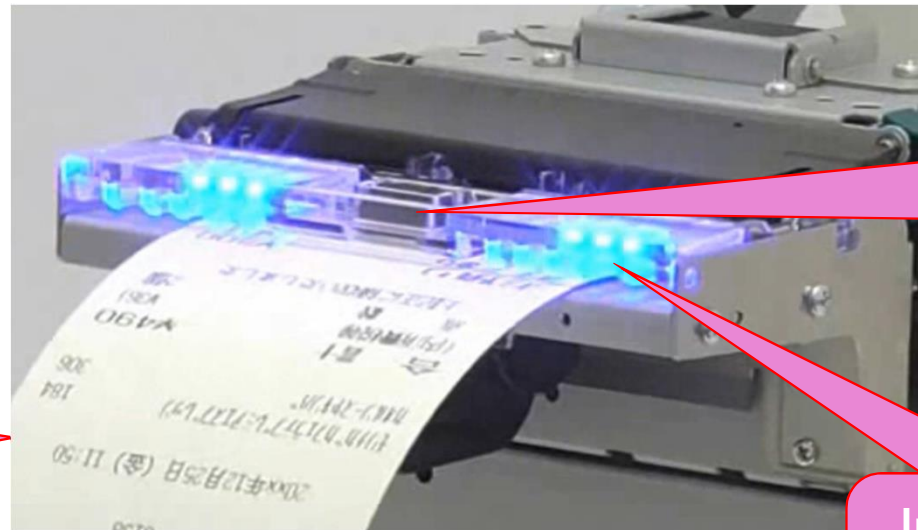
| Presenter Movement | | | | | | | |
|---|---|---|---|-------------------------------|-------------------------------|-------------------------------|-------------------------------|
| Auto Retraction | Auto Ejection | Manual Retraction | Manual Ejection | Complete Retraction | Complete Ejection | Loop Function OFF Retraction | Loop Function OFF Ejection |
| (1) Before Cut | (1) Before Cut | (1) Before Cut | (1) Before Cut | (1) Before Cut | (1) Before Cut | (1) Before Cut | (1) Before Cut |
| (2) After Cut Time elapsed * Cover open/close * Feed Switch ON | (2) After Cut Time elapsed * Cover open/close * Feed Switch ON | (2) After Cut Retraction / Ejection can be set by command. * Cover open/close * Feed Switch ON | (2) After Cut Retraction / Ejection can be set by command. * Cover open/close * Feed Switch ON | (2) After Cut Continue | (2) After Cut Continue | (2) After Cut Continue | (2) After Cut Continue |
| (3) Retraction | (3) Ejection | (3) Retraction | (3) Ejection | (3) Retraction | (3) Ejection | (3) Retraction | (3) Ejection |

• Clamp is the mode of presenter is waiting for paper extraction.
 • Function OFF interprets activating presenter motor synchronized with paper feed motor but no function as presenter. However, since paper detection process and ejection/retraction process are not in function OFF, paper detection error occurs if paper not entered into presenter, present ejection error occurs if paper is not ejected out of presenter.

Effectiveness of Presenters

Other function

It can detect whether the paper has been taken or not. LED indicates to the customer where the printed paper will be ejected from. In addition, LED indicates printer other status.



No paper has been taken yet.
(Paper still inside)

Indicates that the printer paper comes from here.

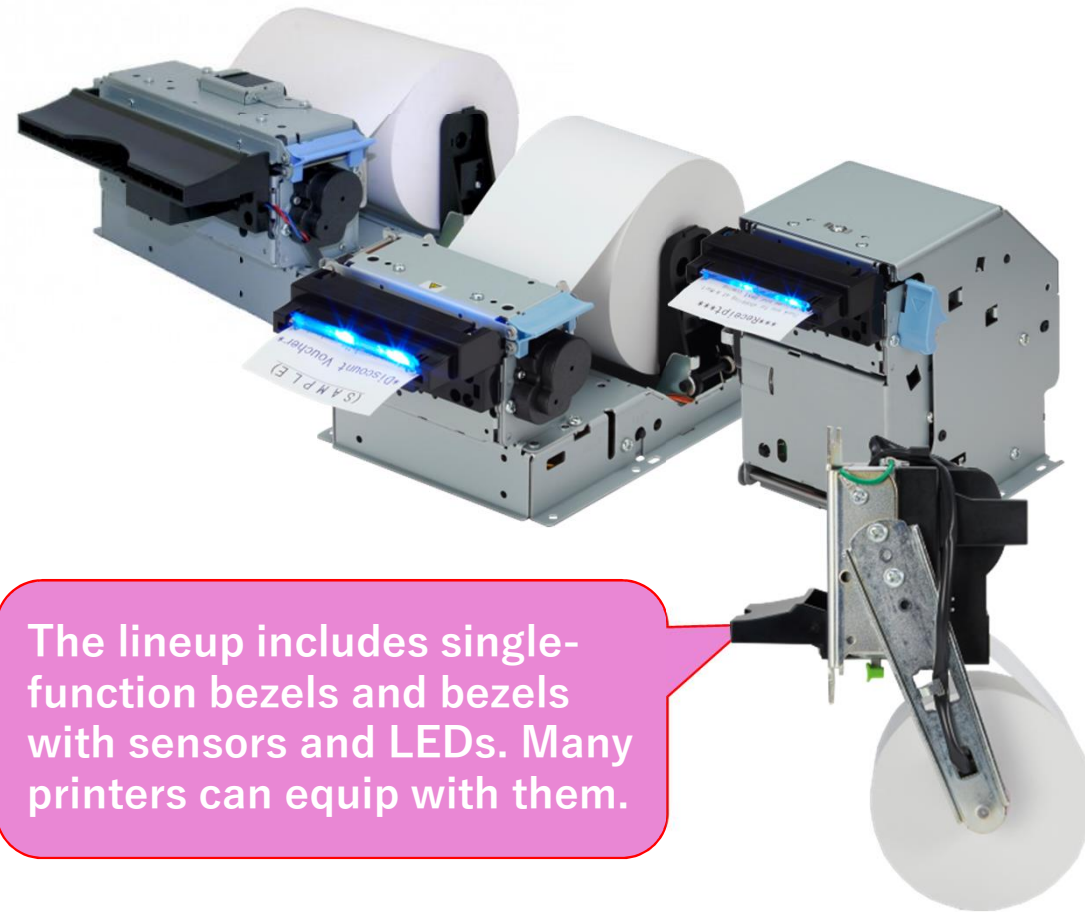
Indicates that no error has occurred in the printer.

Effectiveness of Bezel

Bezel

Even inexpensive bezels have certain effects.

Even if paper is held during printing, paper jamming is avoided by looping it.



The lineup includes single-function bezels and bezels with sensors and LEDs. Many printers can equip with them.

Reduction of paper replacement frequency (Effectiveness of large diameter roll paper)

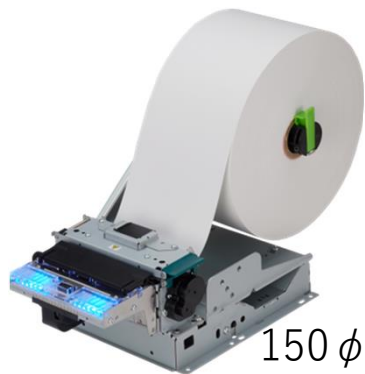
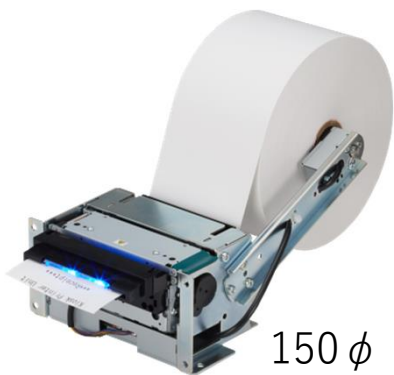
② Printer problem at self kiosk terminals

Paper replacement is an inevitable part of using a printer.
The use of large diameter paper rolls is effective in reducing downtime and maintenance frequency.

| Paper thickness | 80 ϕ roll paper length | 150 ϕ roll paper length | 200 ϕ roll paper length |
|-----------------|-----------------------------|------------------------------|------------------------------|
| 60 μ mm | 75m | 280m | 500m |
| 75 μ mm | 63m | 225m | 400m |
| 95 μ mm | 50m | 175m | 320m |



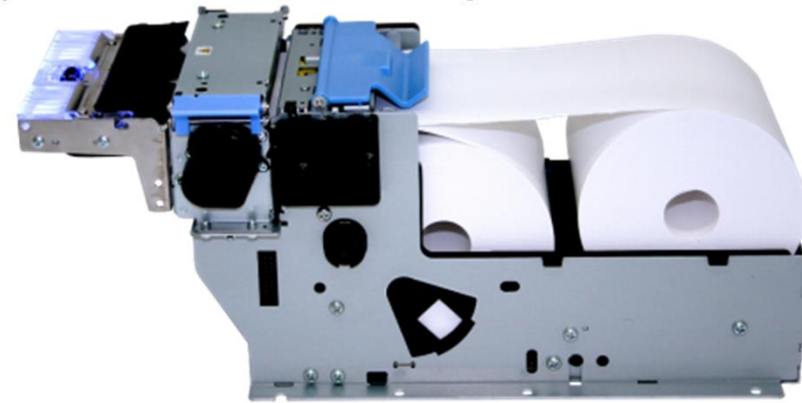
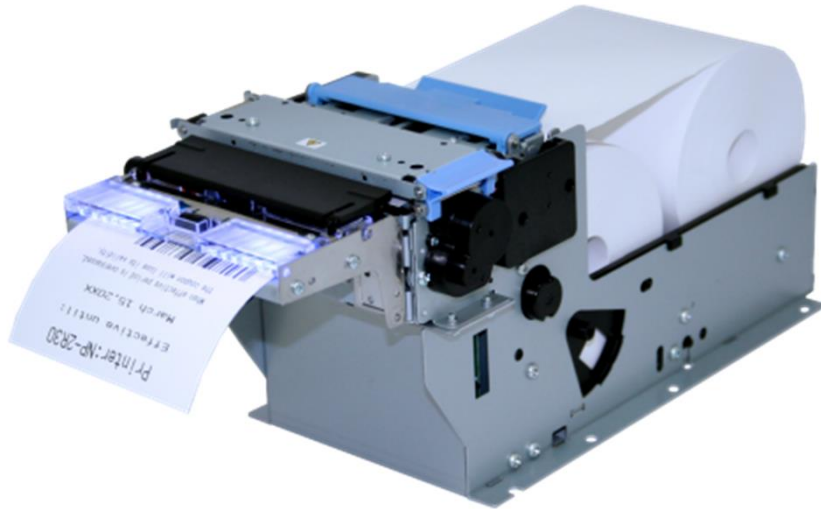
We have a lineup of printers supporting large diameter roll paper and roll paper holders as an option.



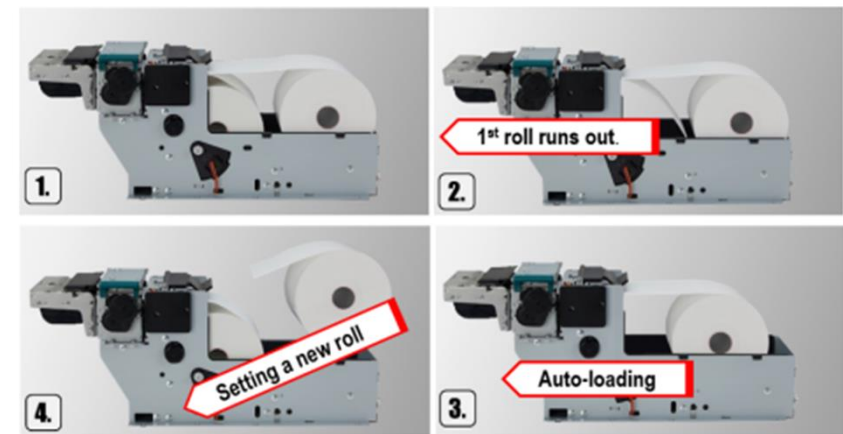
Reduction of paper replacement frequency (Printer with automatic paper feed function)

We have a model that can equip with two 80 ϕ roll paper and can automatically load 2nd roll paper.

It is possible to load 2nd roll paper during operation, eliminating downtime.



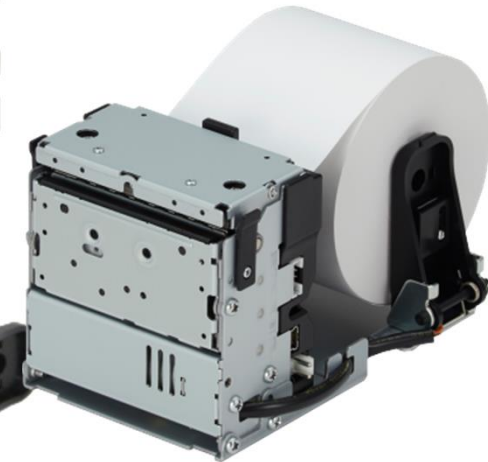
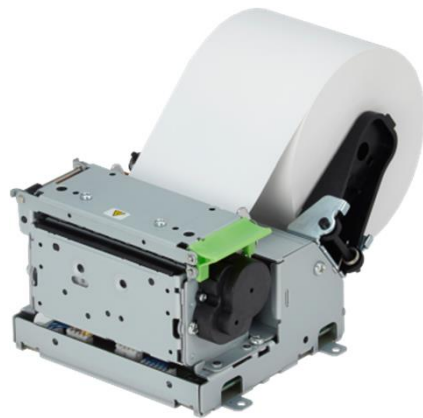
As shown in the figure on the right, when the 1st roll paper runs out, printing is automatically continued on 2nd roll paper.



Lineup to meet various needs

KIOSK application :

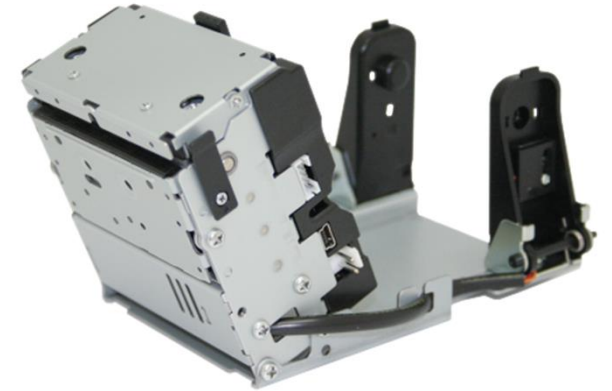
- 👍 Need to mount the printer on the front panel.
- 👍 Need to minimize bottom area.
- 👍 Need to place roll paper position above or below.
- 👍 Need to print many receipts or tickets.



Lineup to meet various needs

Parking application :

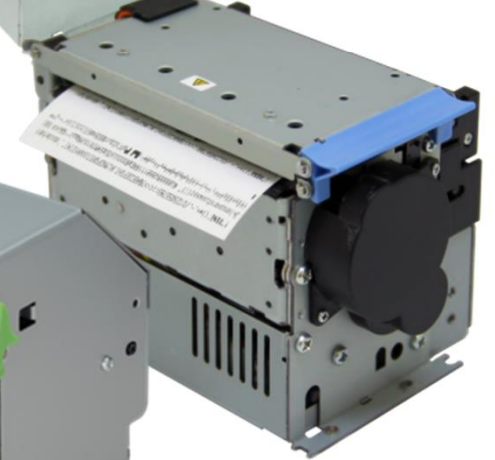
- 👍 Need for wiring and maintenance to be done from the side because cars are parked in front of the terminal.
- 👍 Need to tilt the printer so that fully cut receipts can fall easily.
- 👍 Need to print thick paper with magnetic card support on its back side.
- 👍 Need to issue QR code for discount processing.



Lineup to meet various needs

Other applications

- 👍 Need to minimize downtime for roll paper replacement.
- 👍 Need to replace paper from the front.
- 👍 Need to minimize depth.
- 👍 Need for high-resolution printing



Distributor

Distributor

- 👍 Our printers are used by many customers who use small printers.
- 👍 In the Iberian Peninsula , stable supply and continuous support are available through the distributor.
- 👍 If you have a new product or renewal project that uses printers, we would like to hear from you.
- 👍 Thank you very much for the opportunity to introduce our products today.

SELENIKO 03



<http://www.seleniko.com/>

C Laguna del Marquesado, 19 Nave 9 - 28021 Madrid

TEL: +34 915 650 580

Contact person: Ms. Coral Martinez, <pmartinez@seleniko03.com>

 **NIPPON PRIMEX INC.**